

For Mac



Graphic Tablet User Manual

Contents

I. General Information	3
1. Overview	3
2. Pen Tablet Functions	3
3. System Requirements	3
4. Technical Support	3
5. Package Contents	3
6. Installing the Driver Software	4
II. Driver Interface Introduction	7
1. Click the Applications enter into the Gaomon Driver.....	7
2. Control Interface	8
3. Pen Buttons Settings	8
3.1 Pen Button Functions	8
3.2 Workspace and Hotkey Settings	8
3.3 Workspace	9
4. Digital Pen Pressure Sensitivity Test	9
III. Storing the Digital pen and changing the Pen Battery & Tip	10
IV. Question & Answer	11

I. General Information

1. Overview

Thank you for purchasing this GAOMON Pen Tablet!

A Pen Tablet, with its accompanying wireless digital pen, is a natural and intuitive input device for drawing and image editing tasks. It is also an excellent alternative input device over a mouse when performing conventional computer tasks.

2. Pen Tablet Functions

After installing the device driver, your pen tablet can perform the following functions:

Direct Pointing: You can move the cursor to any location on the screen by hovering the digital pen tip over the tablet's surface.

Three-Button Mouse Commands: Your pen tablet provides all the functionality of a three-button mouse using the pen tip and two buttons.

Pen Scrolling: You can scroll in documents and applications by pressing the middle button on the digital pen while moving the pen over the tablet's surface.

Pressure Sensitivity: The tablet and pen feature 2048 levels of pressure sensitivity so, like a real pencil, the harder you press down the darker and thicker the lines, while minimal pressure will produce faint, thin lines.

3. System Requirements

Mac OS X 10.4.11 or later

Available USB port

CD-ROM driver

4. Technical Support

GAOMON is pleased to provide free, live, online technical support to assist you with any questions you may have about installation, setup, troubleshooting, or product recommendations. If you ever need assistance with your new product, please come online to talk to one of our friendly and knowledgeable Tech Support Associates. Technical support is available through the online chat button on our website during regular business hours, 7 days a week. You can also get assistance through email by sending a message to service@gaomon.net.

5. Package Contents

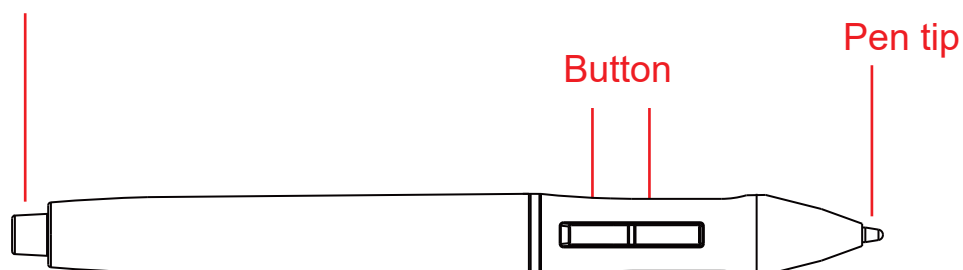
After receiving the product, please inventory the contents to ensure you have all the proper parts, as listed below. If anything is missing or damaged, please contact GAOMON Customer Service for a replacement.

1x Pen tablet / 1x Digital tablet pen / 1x Mini USB cable (4.9ft/1.5m)

1x Pen holder (with 4x replacement pen tips and 1x pen clip tip removal tool)

1x Drivers and software CD / 1x User's manual

Power ON/OFF



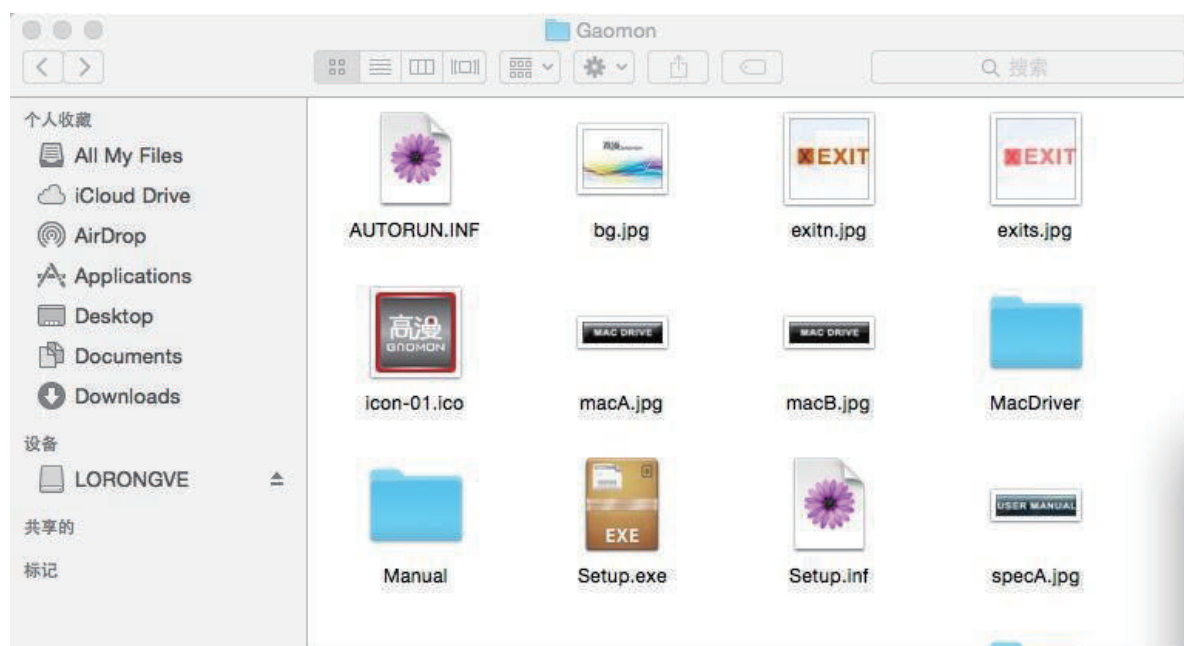
6. Installing the Driver Software

IMPORTANT! Do not plug the tablet into your Mac until after you have installed the device driver.

- a. Insert the disc in the CD-ROM driver.
- b. A disc icon will appear on your desktop with the label "TABLET".
Double-click the icon to see the file structure.

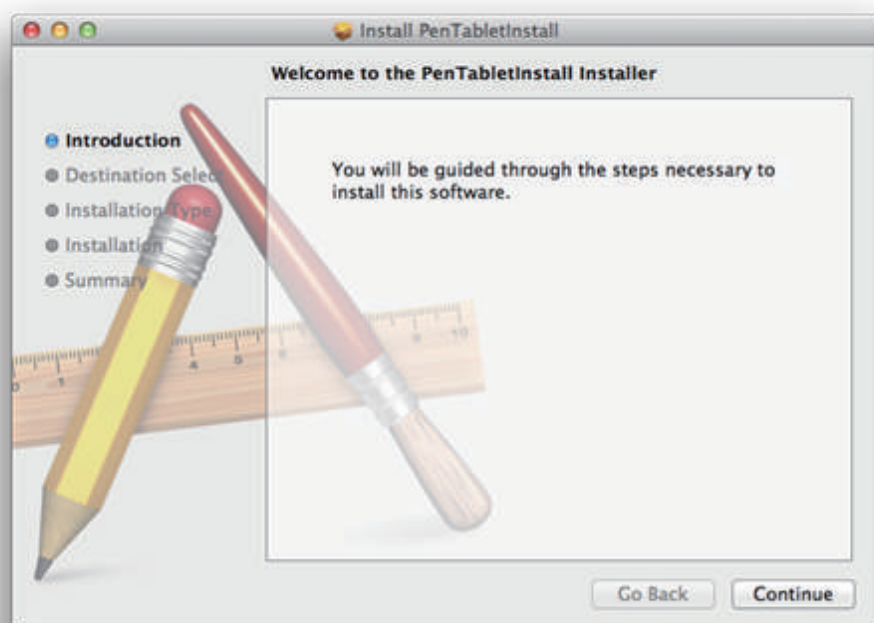


c. Double-click the "MacDriver" folder to open it and see the files inside.

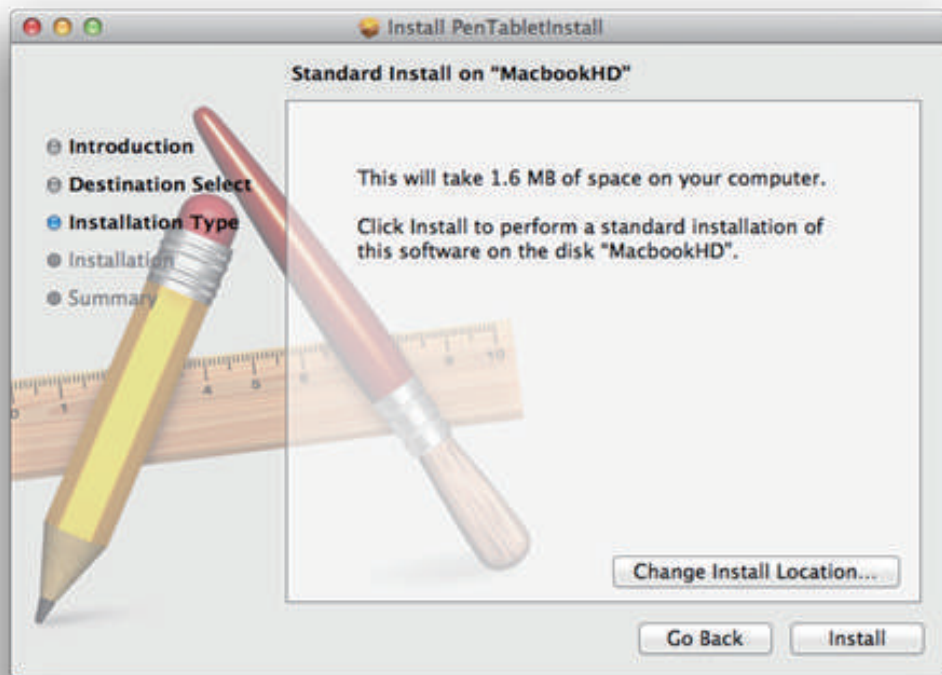


d. Double-click the " Driver " file to start the installation program.

e. Click the "Continue" button on the welcome screen.



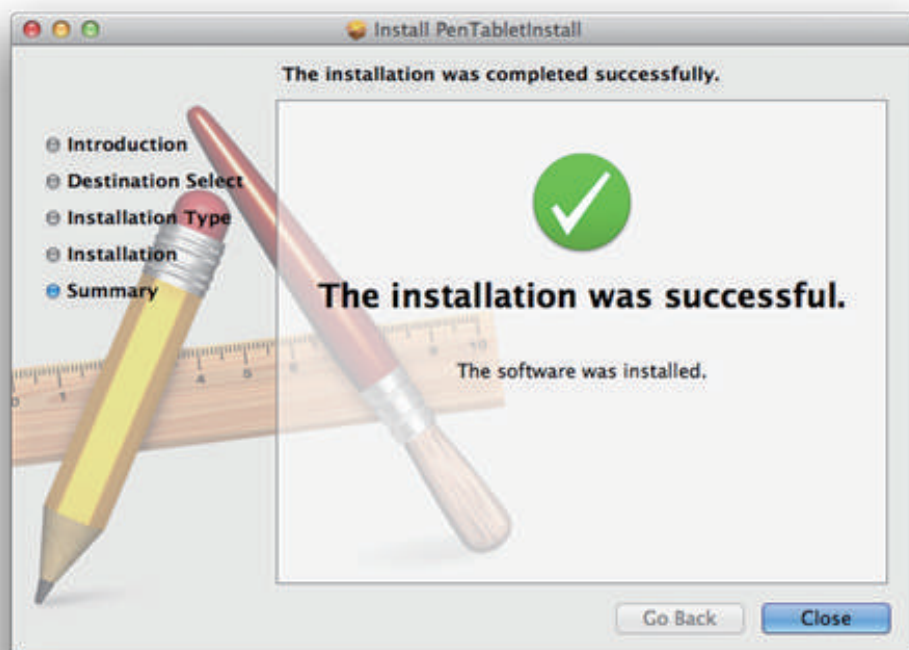
f. Click the "Install" button.



g. If prompted, enter your password.



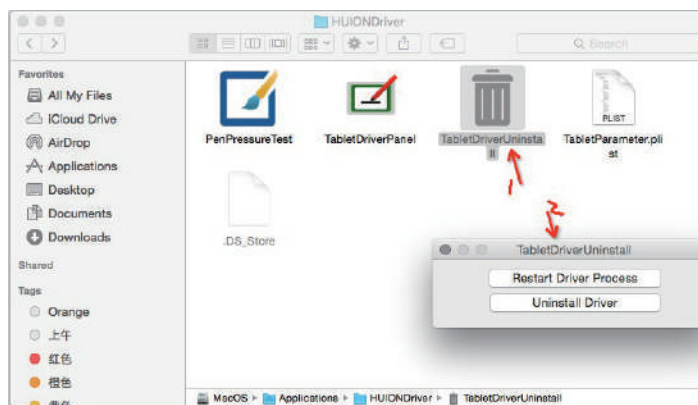
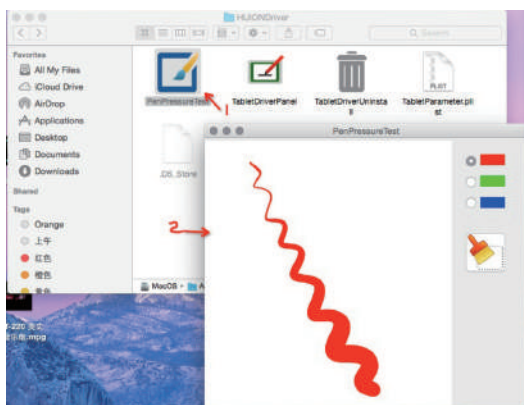
h. Once the installation is complete, click the "Close" button to exit the installer.



II. Driver Interface Introduction

The configuration dialog allows you to modify pressure sensitivity, monitor selection, customize the buttons, etc.

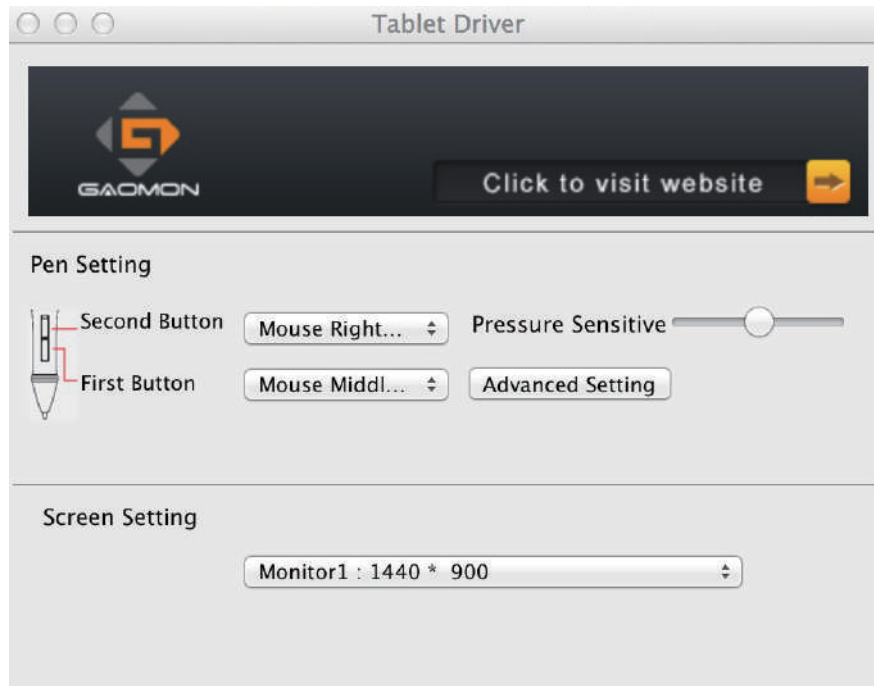
1. Click the **Applications** enter into the Gaomon Driver.



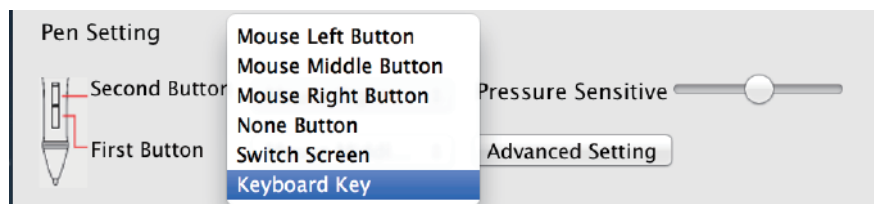
a. Double-click the Gaomon Driver to access the TabletDrivePanel to change settings of the graphic tablet

b. Double-click the TabletDriverUninstall to open it, then you can restart the Daemon Process, or uninstall the Driver.

2. Control Interface



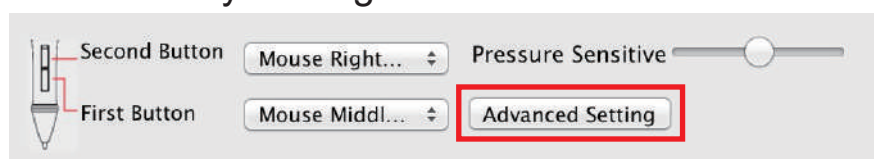
3. Pen Buttons Settings



3.1 Pen Button Functions

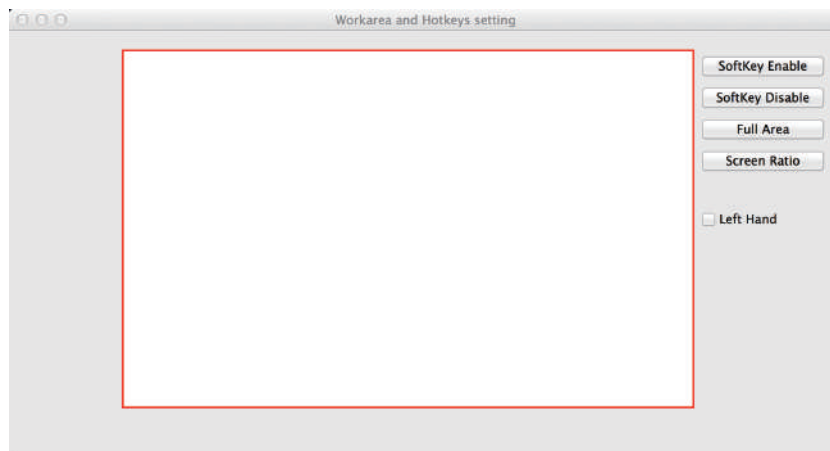
Above is the digital pen function settings. Selecting its "Mouse Left Button, Mouse Middle Button, Mouse Right Button, None Button" on the corresponding right drop-down menu to set the digital pen's "First Button and Second Button" functions.

3.2 Workspace and Hotkey Settings



Click the " HotKey Setting" button in tablet settings (see the selected area above), you can access the working area and hotkey settings.

3.3 Workspace



Area A: SoftKey key settings area

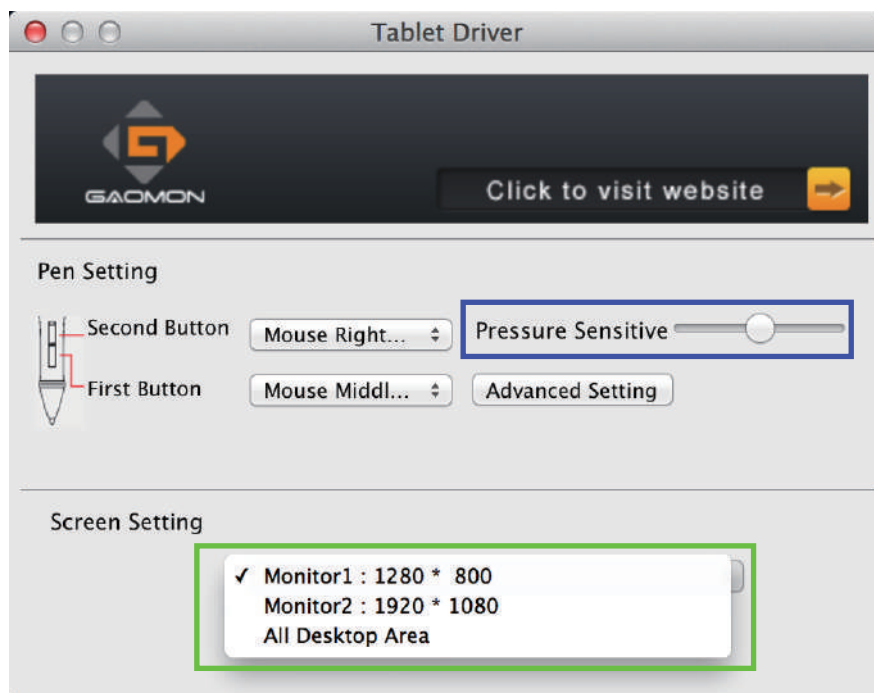
Area B: Express settings area

Area C: The work area

Area D: Softkey has three settings: "Softkey Disable, Softkeys Enable, Full Area".

Softkeys Disable: select this key, the key function will be disabled in the work area. The graphic tablet's work area is limited in the C area.

4. Digital Pen Pressure Sensitivity Test



Pressure sensitivity: move the slider from left to right, it can be used to adjust the sensitivity of the tip and the severity of the stroke when drawing, which affects the change of the handwriting (blue box area).

When your computer has two screens in extended mode, you can choose the corresponding work area of the graphic tablet in the setup screen area (green box area).

III. Storing the Digital pen and changing the Pen Battery & Tip

Storing the Digital pen properly

To store the Digital pen, make sure that the tip does not touch anything, especially, do not let the pen stand in a cup or penholder with the tip down. Pressure applied to the pen tip might damage the precise configuration of the pen, it is recommended to place the pen in a pen holder or store it with the pen tip pointing upward, or place it horizontally with the pen tip free of any other objects.

Note: It's recommended to turn the power off by pressing the power button at top of the pen to save battery. See below about how to change batteries.

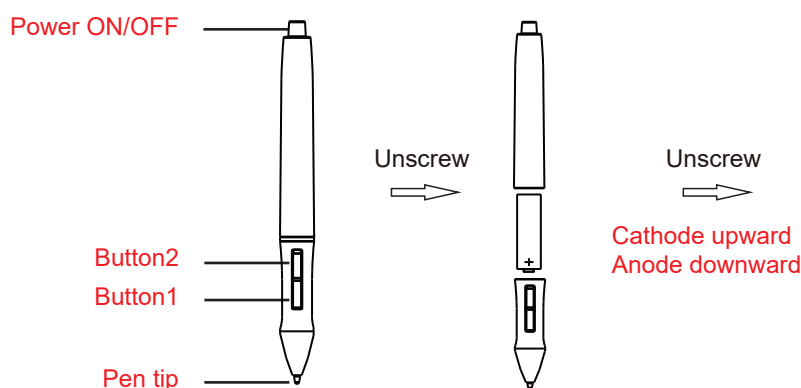


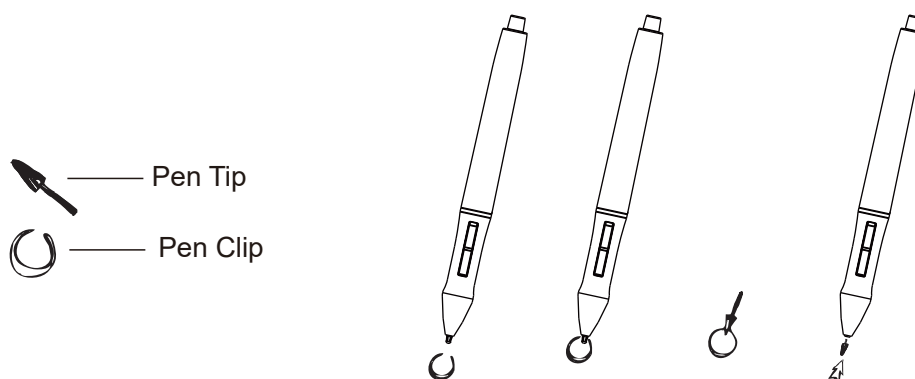
Fig. (A) Unscrew the pen,

Fig. (B) Put an AAA battery into the pen-holder, + pole towards to pen tip end.

Hold down the power on/off button, then the pen works.

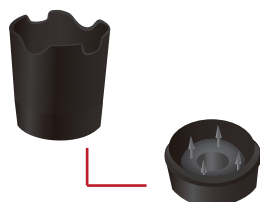
replacing the wireless stylus pen tip

A: Pull out the pen tip from Digital pen by using a Pen Clip that contained inside the pen holder.
Normal Pen Clip



B: Push the pen tip into the digital pen and make sure fit it up to the end properly.

Gently unscrew the pen holder in a counterclockwise direction. you will see one pen tip replacement tool & 4 spare pen tips inside.



The pen tip replacement tool and 4 pen tips

IV. Question & Answer




Question 1: How can I get the update software?

Answer: You can download the new driver from our website.

- (1) Uninstall your old driver: Click [Start] ► [All Programs] ► [TABLET] ► [Uninstall].
- (2) Download the latest version of driver in the download section and save it into your hard disk.
- (3) Unzip the file in a folder on your hard disk (with Windows built-in unzip utility or a program like Winzip for instance).
- (4) Double-click the Setup.exe in the folder where you unzipped the file.

Question 2: The tablet cannot work. How can I do?

Answer: Please follow steps as showing below:

- (1) Please pull off the tablet's USB plug from the computer.
- (2) Remove the Tablet driver from the system.
- (3) Re-connect the Tablet's USB to the computer.
- (3.1) Test your wireless digital pen on tablet working area, if it can work as a mouse, which means the hardware is OK. If it doesn't work, please change the battery with a new one.
- (3.2) After changing a new battery for the pen, if it still not working, it means that the hardware is faulty.
- (4) You can download the latest version of driver directly from our website: www.gaomon.net.
- (5) After installing the new version of driver, the system will require you to restart your computer.
- (6) After restarting your computer, on bottom right of the screen, you can find the tablet icon () within there.
- (6.1) If you can't find the tablet icon () on the bottom right of the screen, it means the driver fail in startup, which might be due to incompatibility.
- (6.2) Check from [My Computer] ► [Properties] ► [Hardware] ► [Device Manager], if there is an exclamation mark occurs, it means the installed driver of tablet is incompatible with the windows system. If you have this problem, please contact us for more service.
- (7) By clicking the tablet icon () on the bottom right of the screen, you can test the pressure sensitivity to see whether the pen pressure function works or not. If you do not have the pen pressure, it means the pen might be faulty. (Please see Chapters 2, Section 6. — Pen Tablet Configuration for more information).