

USB2.0 TV TUNER BOX

USB2.0 TV TUNER Box is the newest TV receiving and video capturing device designed for Notebook and PCs. It is an external TV/video receiving box with the smart and fashion designed outside and powerful function inside. It can make your computer a mobile TV station and enable you to enjoy wonderful TV programs anytime and anywhere.

Key Features:

- New and high performance USB2.0 IC
- Support NS-High Speed, data transfer rate reached 480M bps
- The features of products are completely accord with the specification of USB2.0 and it has received USB2.0 specification certificate
- Applied on various types of desktop PC and Notebook
- Full channel (supplementary channel contained) scanning, up to 125 TV channels receivable
- Support TV, Video, DVD/VCD displaying and watching, music listening, picture browsing
- Support multi-national languages
- Support audio/video USB mongline transfer
- Remote control

Hardware Specifications:

- Chipset: Trident TV Master 6000
- TV standard: NTSC_M, PAL_I/D/B
- Video Input: TV, S-Video, Composite
- Audio Stereo input: Left, Right
- Video Resolution: 720*576 (PAL) 720*480 (NTSC)
- Video Capture rate: 25 frames/second (PAL) 30frames/second (NTSC)\

System Requirements:

- CPU: PentiumIII 800 or above
- Operation System: Windows 2000 SP4; XP SP2
- Interface: USB2.0
- Memory: 64 MB
- DirectX 9.0C
- CD-ROM or DVD-ROM Drive
- 500 MB of available hard disk space or above

Cable Connection Chart

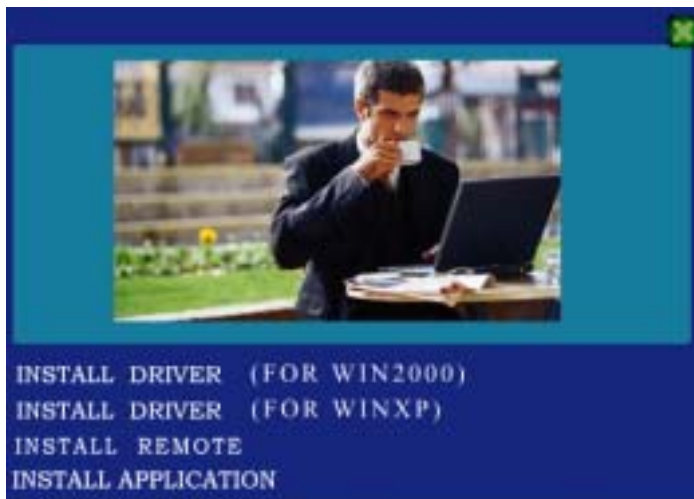


Install USB2.0 Box Driver for Windows 2000 or XP

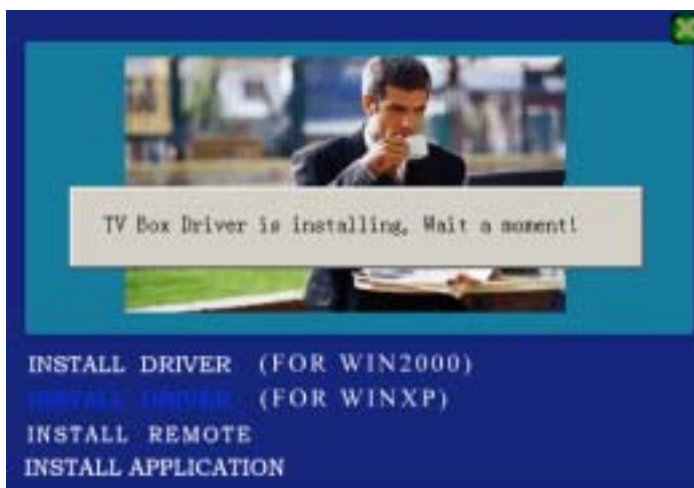
First, you need to make sure that all the connection are linked. Then put the TV Box into the USB Slot. Click **Cancel** of Found New Hardware. Then place the CD into the CD-ROM drive. The installation main screen will appear. If the Autorun has been disabled, you may launch the Autorun by double-clicking the AutoRun file in the CD.



Click **Driver Install** to continue



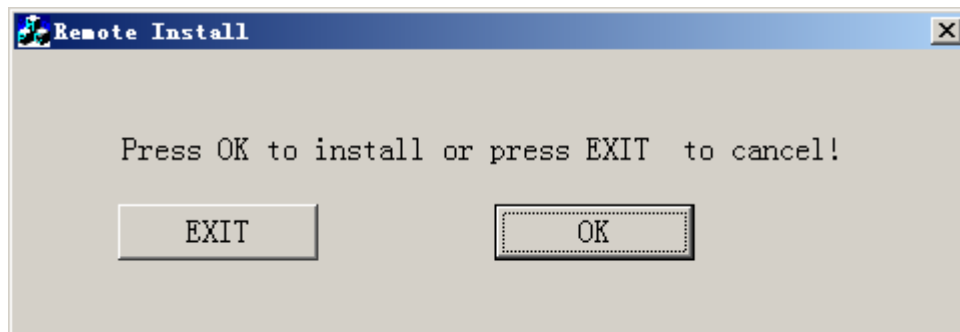
Choose **Install DRIVER** according to you operate system to install the TV Card Driver



Click **OK** to finish the installing

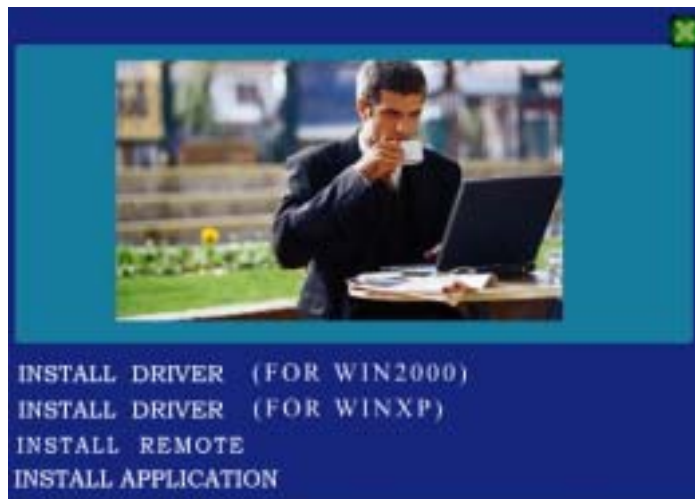


Click **Install Remote** to install Remote



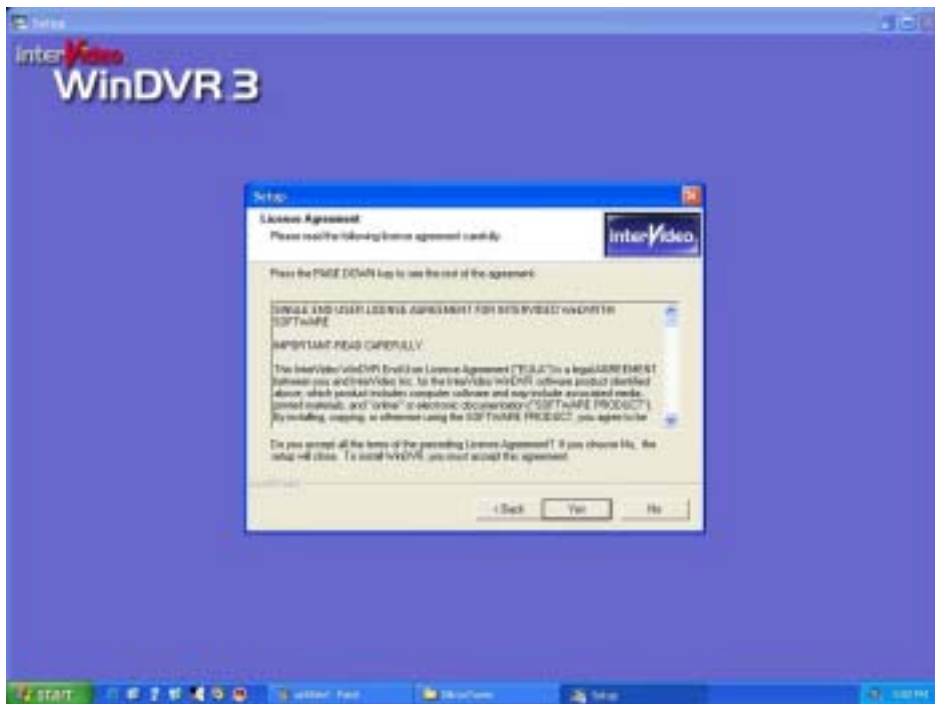
Click **OK** to install Remote and then Click **OK** to finish

Click **Install application** to install WinDVR 3.0

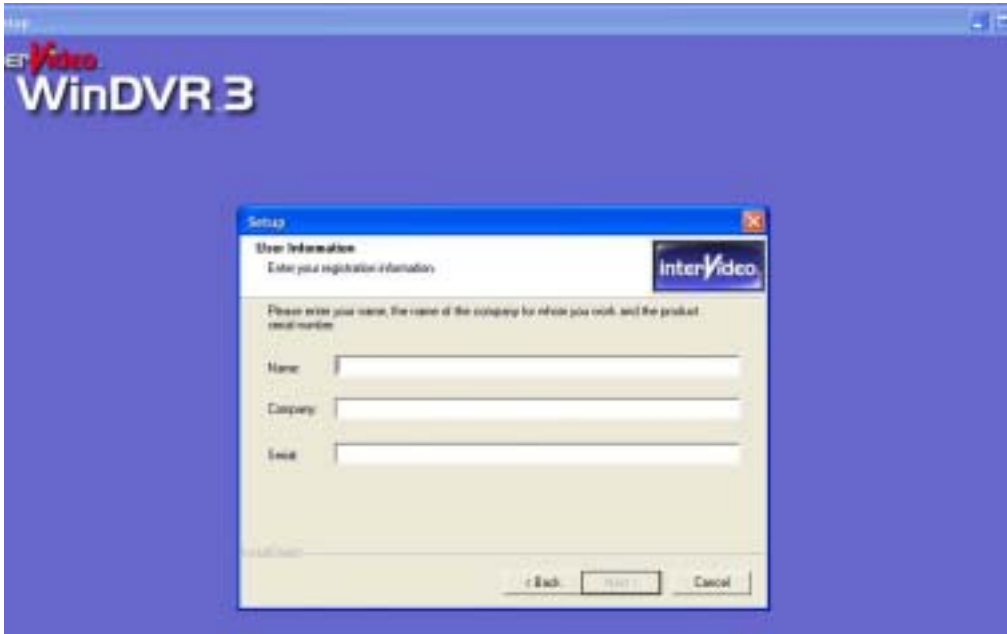




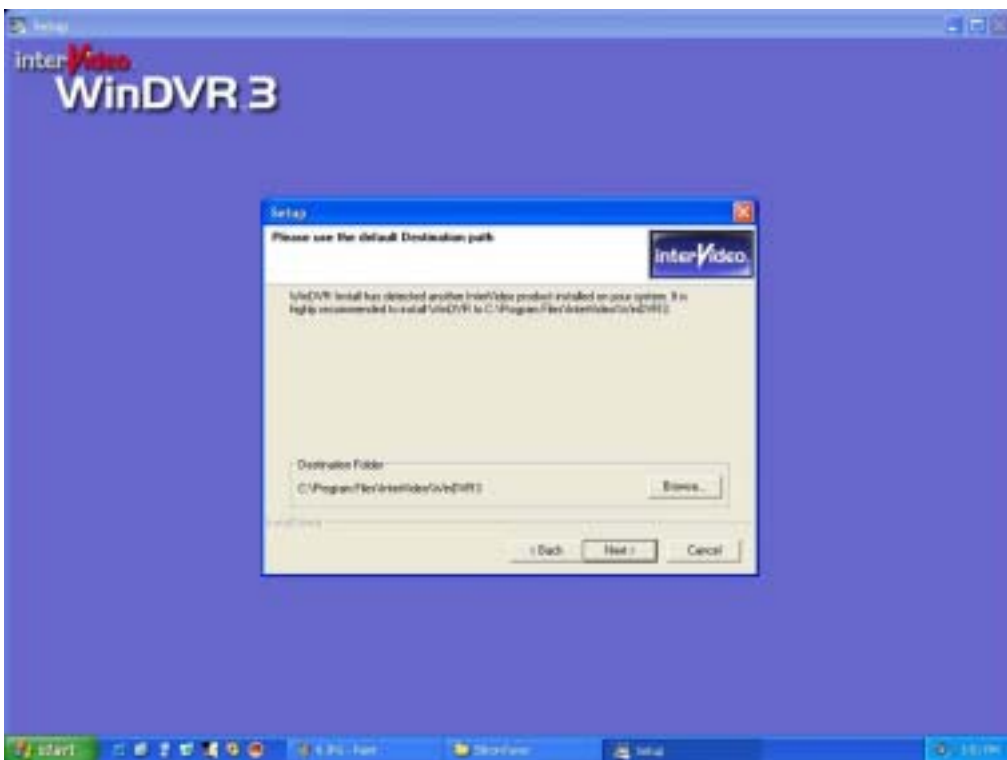
Click **Next** to continue.



Click **Yes** to continue.



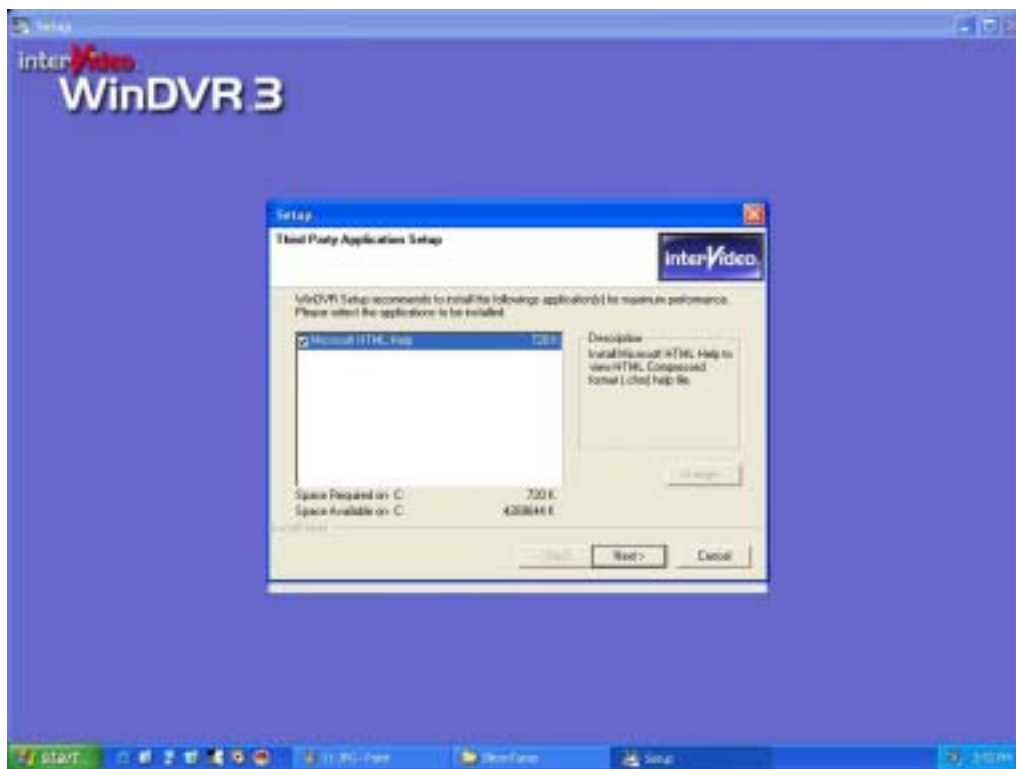
Enter your Name, the name of the Company for whom you work and the product Serial Number.
Click **Next** to continue.



Click **Next** to continue.

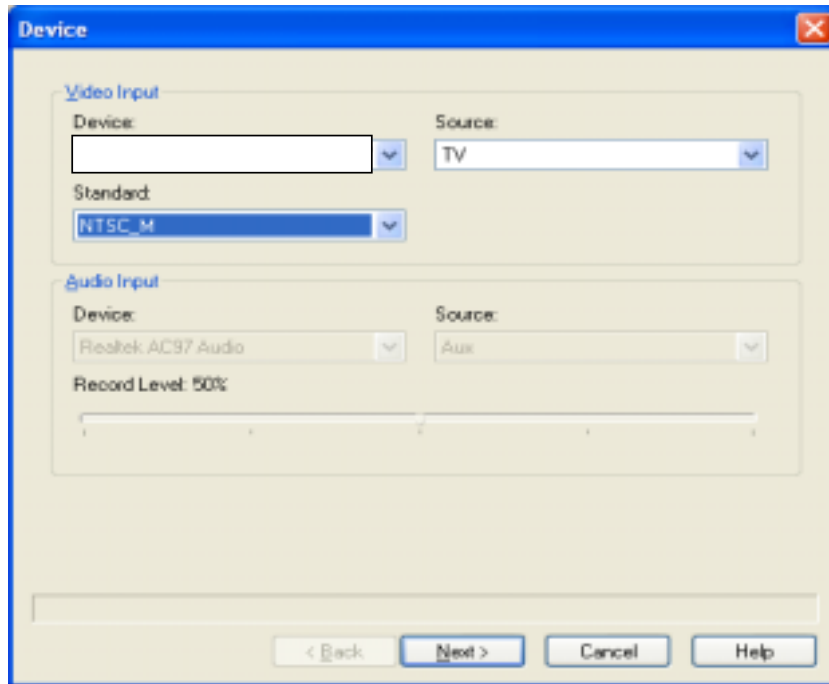


Click **Next** to continue.

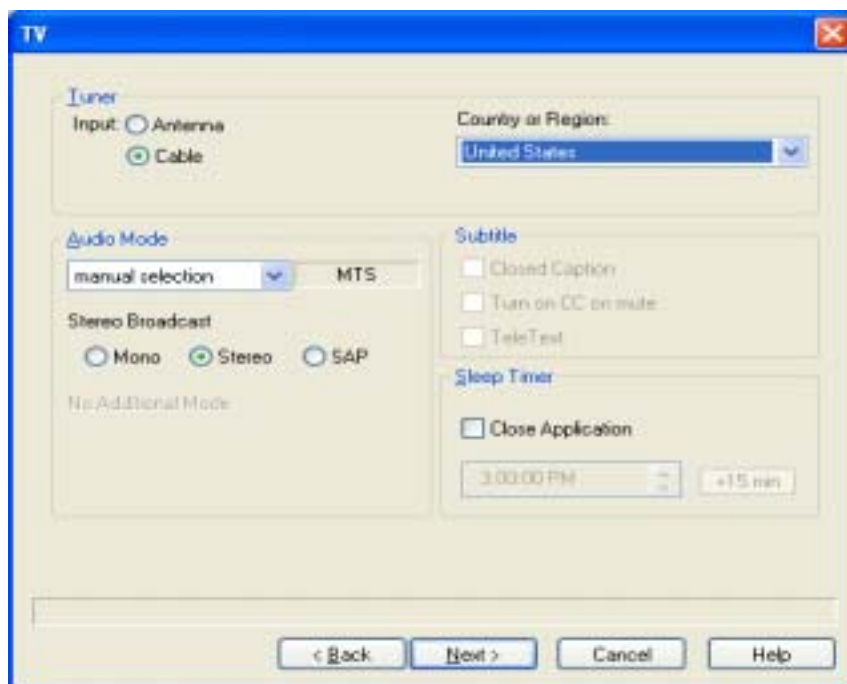


Click **Next** and then the system will finish the setup of WinDVR3.0

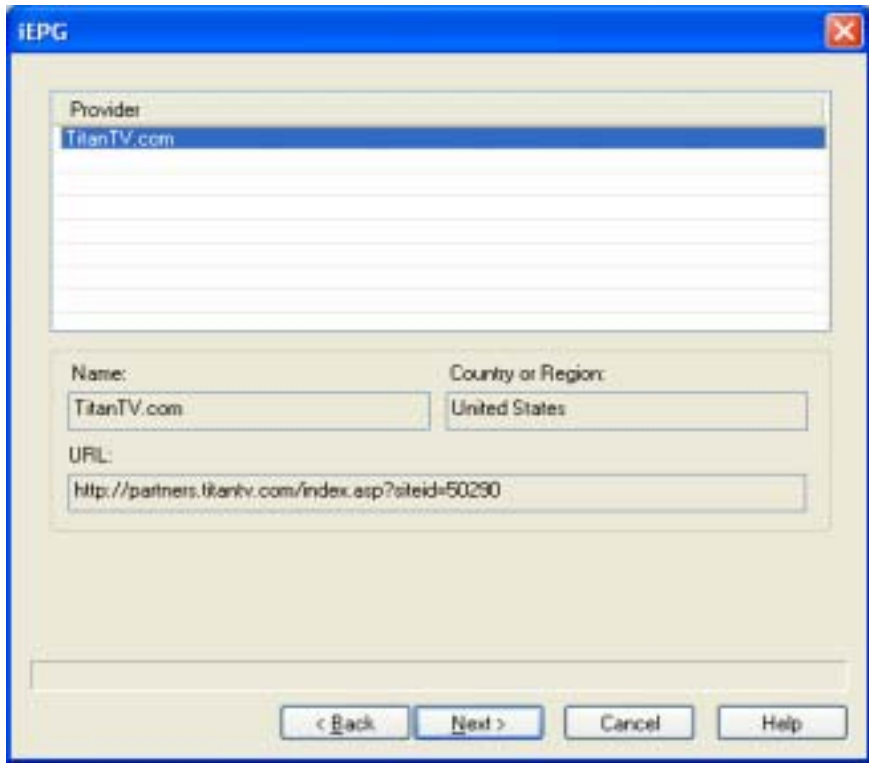
Double click the icon of WinDVR3.0 on the desktop, after a while, the Device dialog box will appear as following, choose the Standard used in your country and click Next to continue.



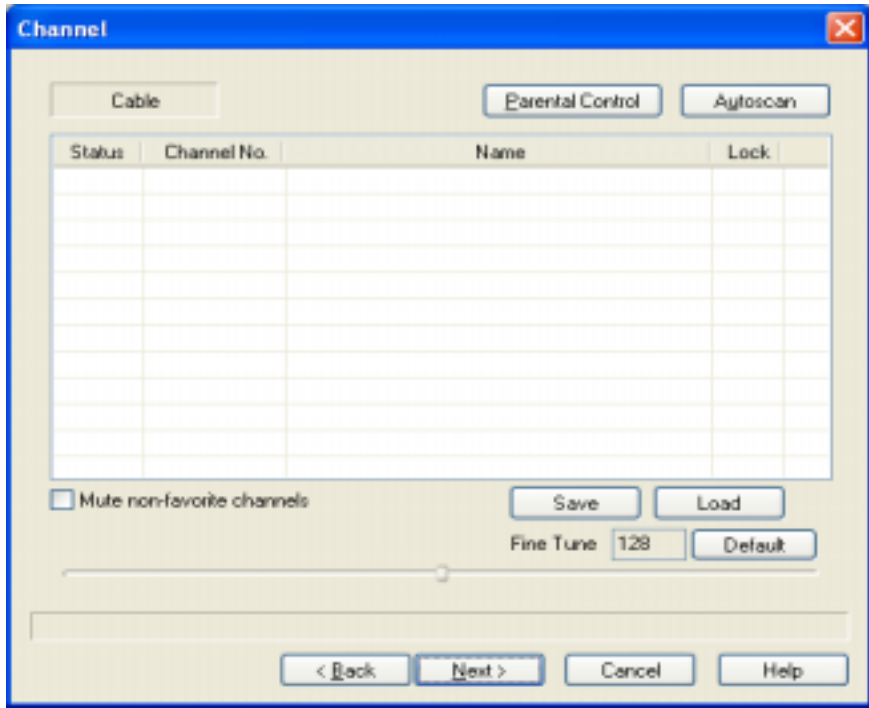
Choose the Tuner, the country, and Stereo Broadcast you need and click **Next** to continue.



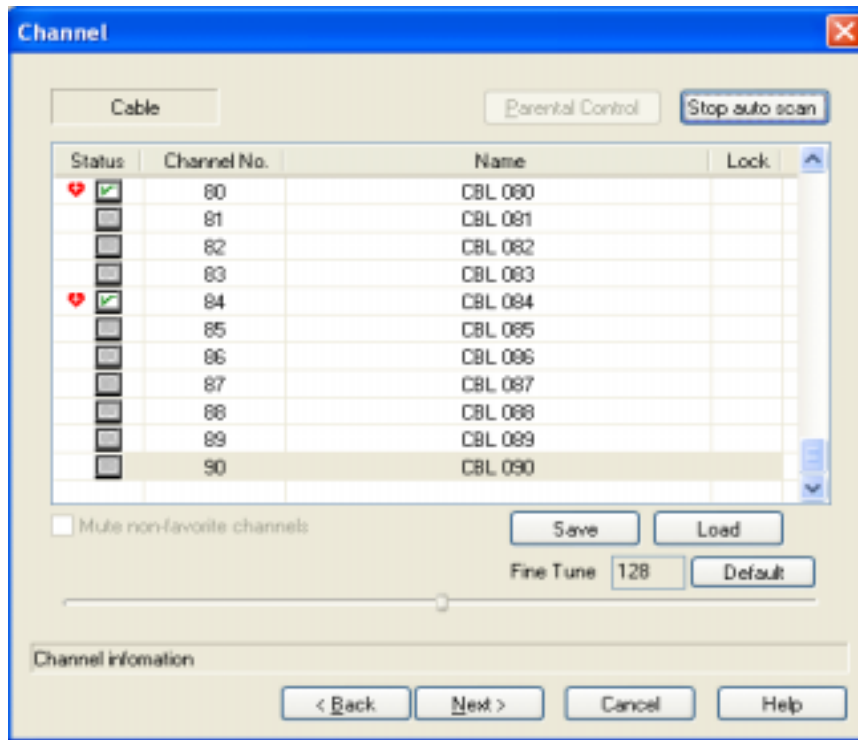
Click **Next** to continue.



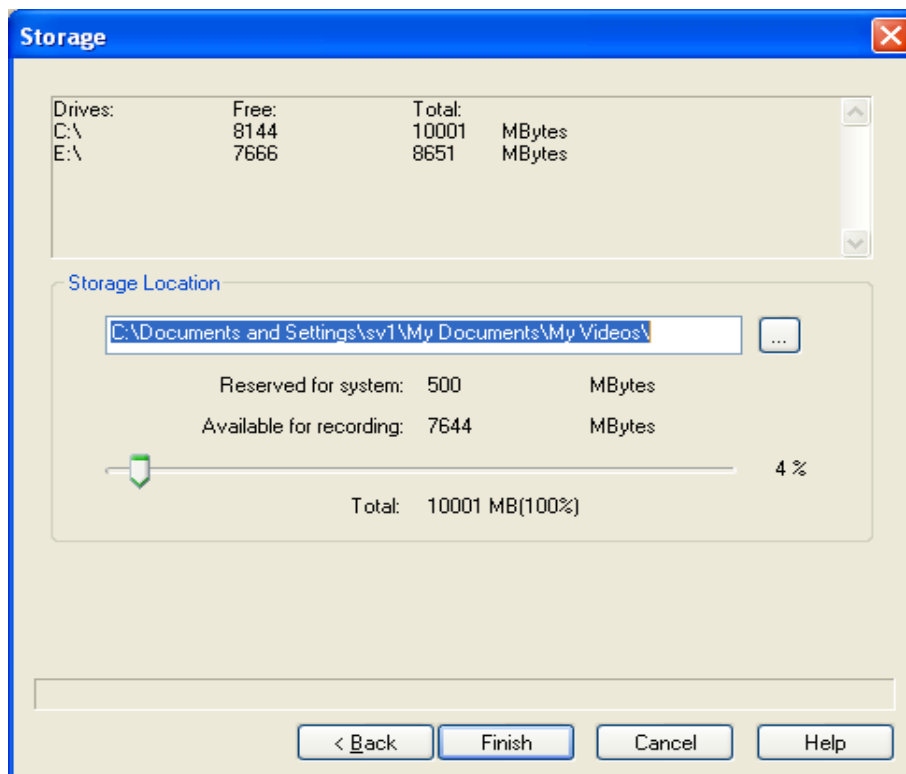
Click **Auto Scan** to scan the TV programs.



After finished the scanning, click **Next** to continue.



Choose the **Storage Location** and click **Finish**. Now you can enjoy the wonderful TV programs with the **TV Box**.



Note:

1. Making all the connection of the box before put it into the USB slot.
2. Do not move any connection of the box while run it.
3. When pop-up Found New Hardware dialog box, click Cancel.