

Quick Installation Guide

300Mbps Wireless-N PCI Adapter

300Mbps Wireless-N PCI-e Adapter

Model No.: NE-WN3500D/NE-WN3800D

Hardware Installation

Steps:

1. Turn off your computer and unplug the power cord from the computer.
2. Open the chassis, locate an available PCI or PCI Express slot (Depends on the model purchased) and removes its slot cover.
3. Insert the adapter into the PCI or PCI Express slot.
4. Secure the adapter with the screw removed in step 2.
5. Close the chassis and plug-in the power cord back into the computer.
6. Turn on the computer.

You may see the **Found New Hardware Wizard** after the adapter has been inserted. Please click **“Cancel”**.

For Windows XP:



For Windows Vista:

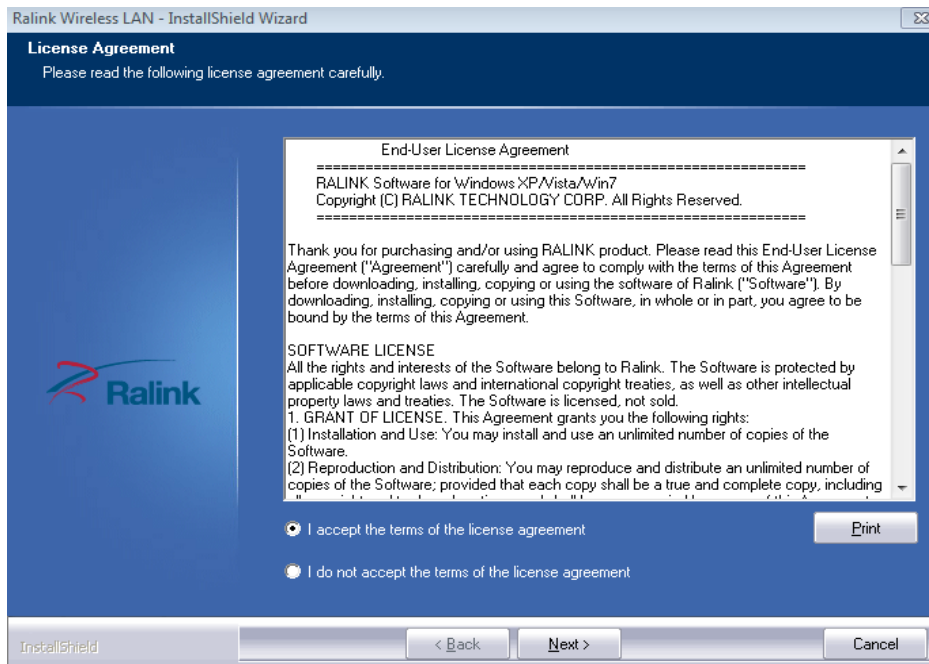


Software Installation

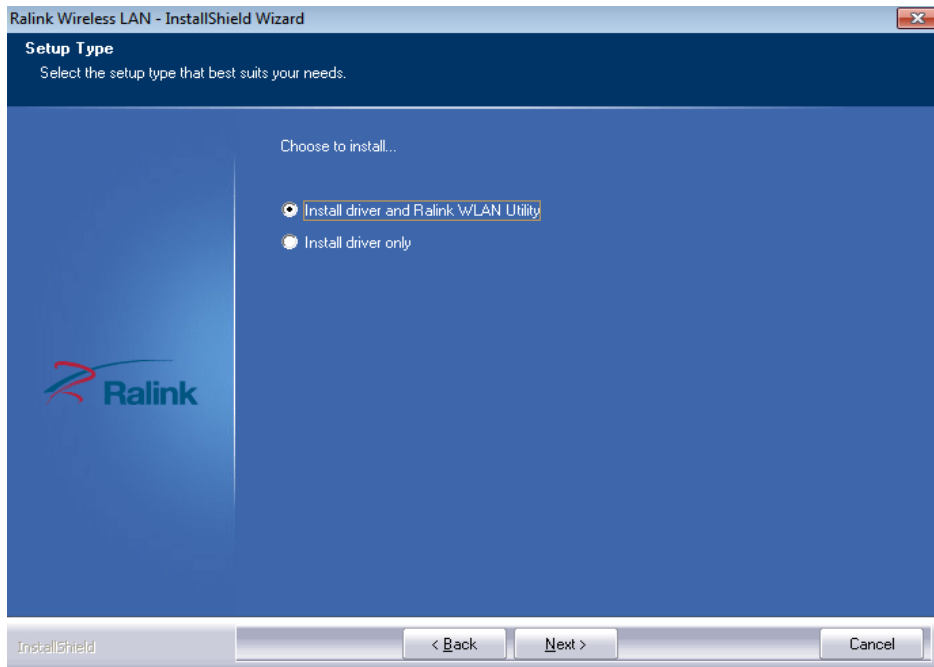
Caution: Product should NOT be inserted at this time. You will be asked to insert product after the software is completely installed.

Note: Screen-shot image provided below is based on Windows 7. You may see different screen on other operating systems but procedures are the same.

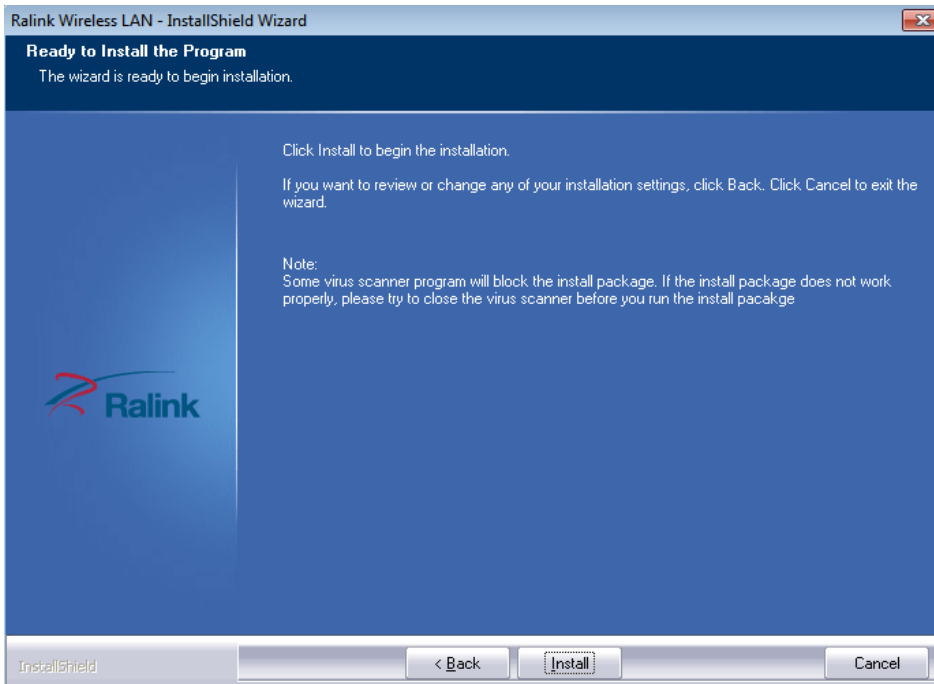
- A. Power on your computer and allow **Windows 2000/XP/Vista/7** to load fully.
- B. Insert the installation CD into your CD-ROM drive and find the appropriate product model to install, then run “Setup.exe” program. “Ralink Wireless LAN – InstallShield Wizard” will appear on your screen, then select “**I accept the terms of the license agreement**”, then click “Next”



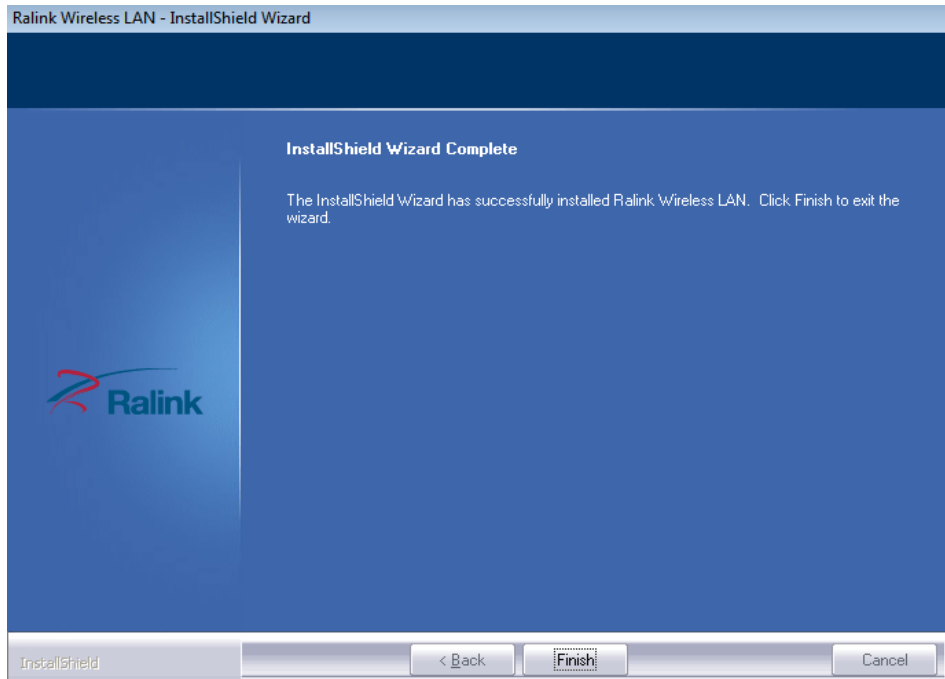
C. Choose “**Install driver and Ralink WLAN Utility**” and click “Next”.



D. Click “**Install**” to begin the installation of driver and utility for your adapter.



- E. Click “Finish” when you see “InstallShield Wizard Complete” to finish the installation.



You will see “Configuration & Monitor Utility” icon appears on your system tray when the installation is completed successfully.



If you don't see the icon, we highly recommend you to restart the computer. However, if you still don't see the icon appears, please uninstall and reinstall the software again.